

**JEWELLERY, ACCESSORIES & LEATHER GOODS DESIGNER**

---

**Julie Maréchal**

---

[julieberangere.marechal@gmail.com](mailto:julieberangere.marechal@gmail.com)

+1 (646) 920-6884

CH A O S

# Alphabet Balloon pendants

—  
GOLD-PLATED UNIQUE CHAOS BALLOON ALPHABET. THE CHARMS CAN BE WORN ON THE GOLD KEYRING, THE GOLD CHAIN NECKLACE OR ATTACHED TO THE ICONIC CHAOS ZIP LANYARD

—  
DEC19 - CORE COLLECTION



**CHARM DESIGNED  
ACCORDING TO A SPECIFIC  
CHAOS DESIGN FONT**

—  
THE BALLOON  
CHARM DESIGN HAS  
BEEN DEVELOPED IN  
COLLABORATION WITH A  
GRAPHIC DESIGNER.







CHVOS

# Charm Hand Hug phone case

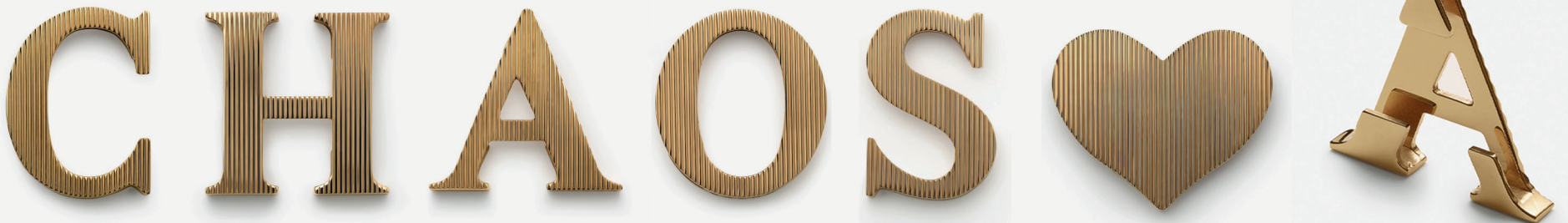
CUSTOMIZABLE IPHONE CASE WITH GOLD CHARMS SLOT ONTO A COMFY ADJUSTABLE HAND STRAP.

DEC19 - CORE COLLECTION



IPHONE CUSTOMIZABLE  
HAND HUG

—  
GOLD PHONE JEWELLERY  
CHARMS WHICH SLOT  
ONTO THE HAND HUG  
CHAOS PHONE CASE.



**CHVOS**

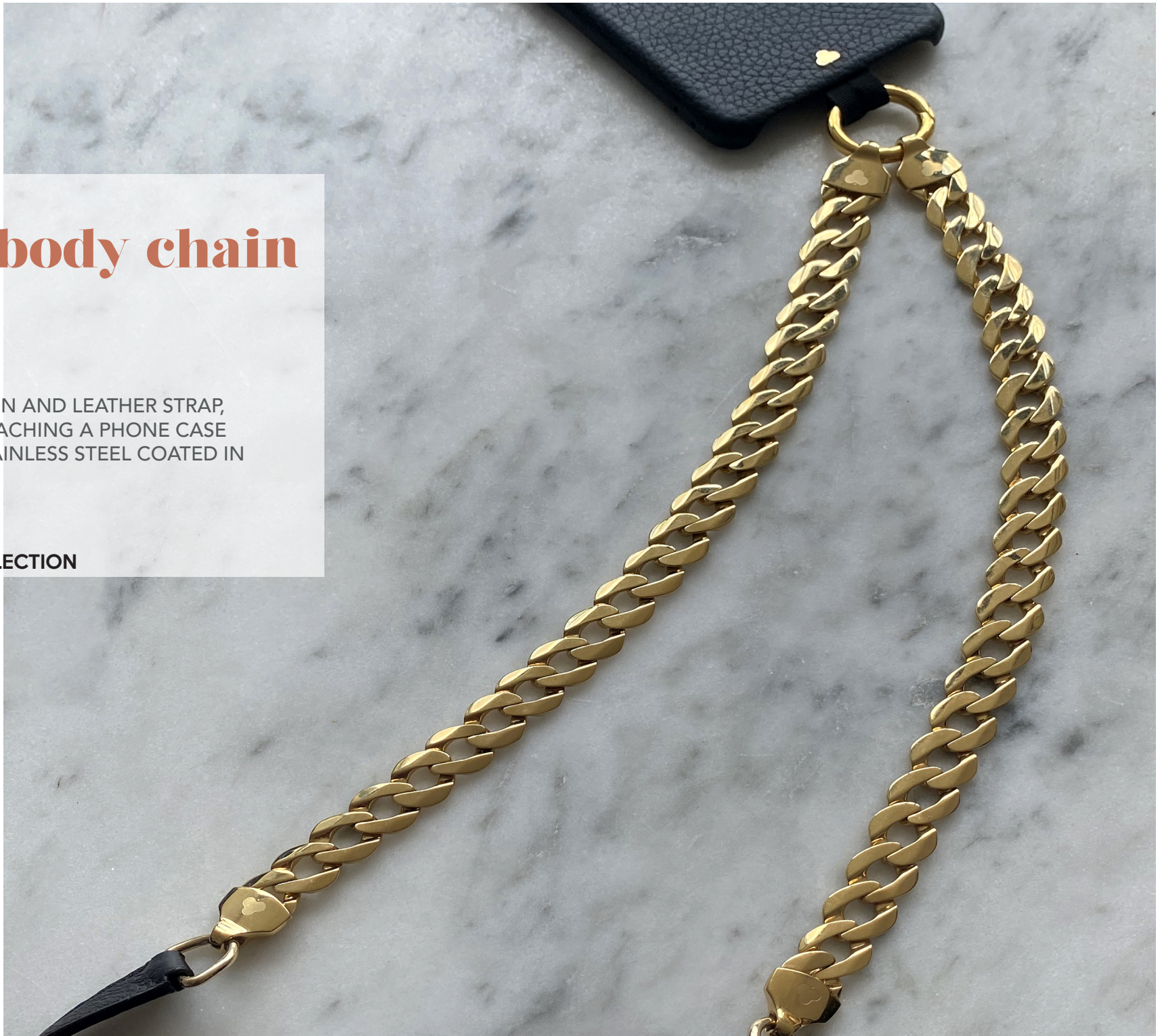
# Cross body chain strap

—

ADJUSTABLE CHAIN AND LEATHER STRAP,  
PERFECT FOR ATTACHING A PHONE CASE  
OR A CLUTCH. STAINLESS STEEL COATED IN  
GOLD PVD

—

**SS19 - CORE COLLECTION**







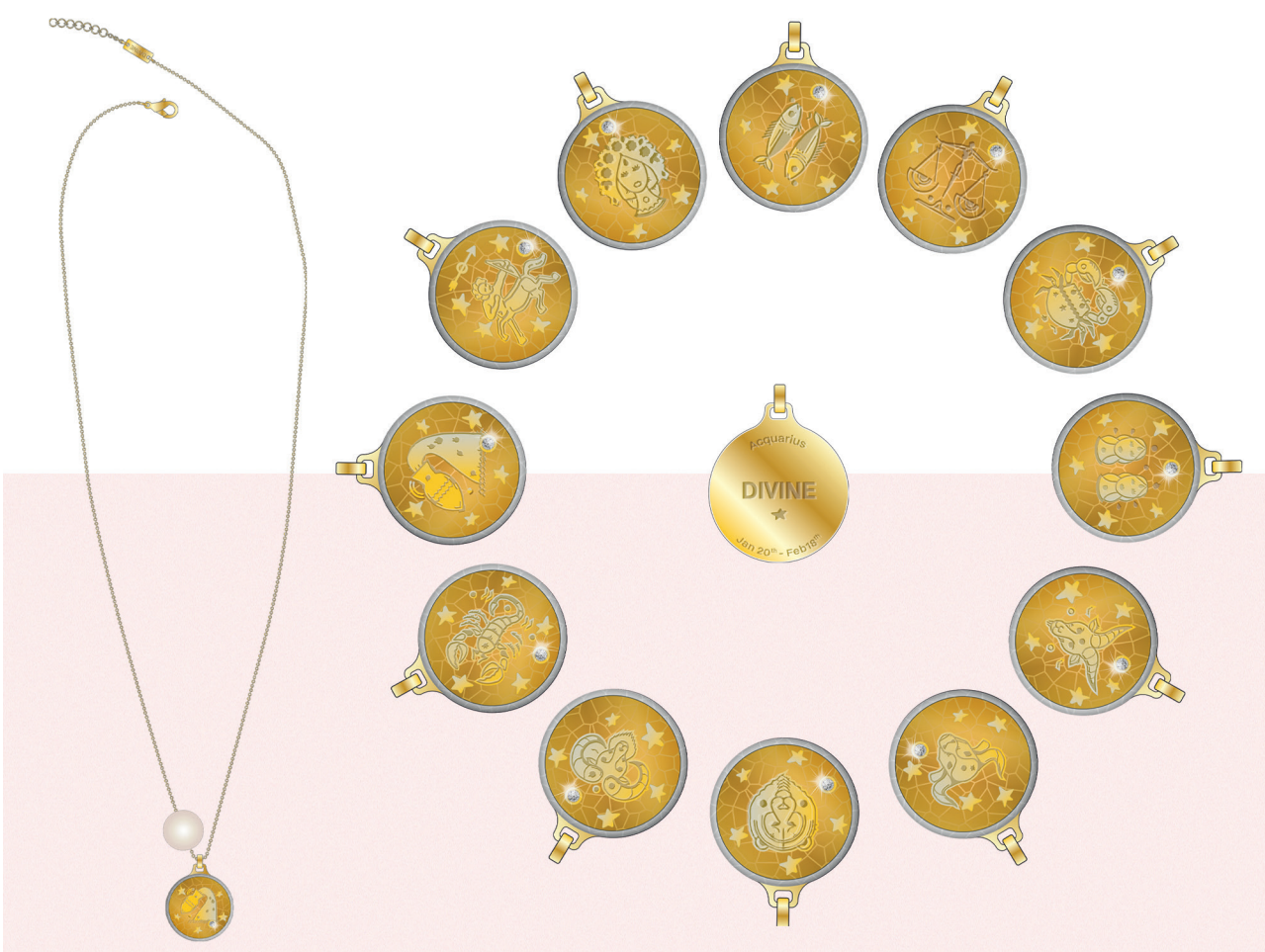
# DIVINE

## Zodiac mini collection

—  
SET OF EARRINGS AND NECKLACE INSPIRED  
BY THE ASTROLOGICAL SIGNS DECLINATION.  
EACH MEDAL IS EMBELLISHED WITH A SET  
SWAROVSKI CRYSTAL TO REFER TO THE  
ASTRAL AESTHETIC INSPIRATION OF THE  
BRAND

—  
OCT19





L'Etoffée

# L'étoffée by Julie Maréchal

—  
L'ÉTOFFÉE:

*ÉTOFFE, FEMININE NAME  
FABRIC USED IN FASHION OR IN FURNITURE.*

L'ÉTOFFÉE PROPOSES FEMININE  
ACCESSORIES MADE FROM WEAVED  
UPCYCLED VINTAGE SCARVES.  
THIS BRAND AIMS TO FIGHT AGAINST  
TEXTILE WASTE BY GIVING A SECOND LIFE  
TO PRE-OWNED MATERIAL BY OFFERING  
A NEW INTERPRETATION OF UNIQUE AND  
COLORFUL PRODUCTS

—  
SINCE WINTER 18



## MADELEINE CREW NECK NECKLACE

THIS PROJECT WAS BORN FROM THE ENCOUNTER BETWEEN ECO-DESIGN AND MY PASSION OF VINTAGE FABRICS.

IN THE AGE OF CONSCIOUS CONSUMERISM AND THE GROWING AWARENESS OF THE IMPACT OF FINISHED FABRIC PRODUCTS WASTE ON OUR ENVIRONMENT, L'ÉTOFFÉE INCARNATES THE WILL TO REUSE AND REDESIGN VINTAGE SCARVES INTO JEWELLERY AND ACCESSORIES.

EVERY PRODUCT IS UNIQUE AND HANDMADE IN MY NEW YORK-BASED WORKSHOP.



EVERY STYLE IS NAMED AFTER THE WOMEN WHO HAVE BEEN A SOURCE OF INSPIRATION TO ME : ADELAIDE, MARIE, JEANNE, AND MADELEINE.



ADELAIDE PENDANT AND  
CREW NECK NECKLACE



JEANNE, BRACELET



MARIE, HOOPS EARRINGS





**SOPHIE HULME**

# Charms collection

DESIGN OF A VARIETY OF BRASS CHARMS  
BASED ON THE PARTY THEME.

TRUMPET CASE, TRUE OR LIE  
DETECTOR, LOVE HEART CANDY CASE, NAME  
TAG, PARTY POPPER, CANDLE HOLDER /  
CANDLE CASING.

PREAW17 / AW17

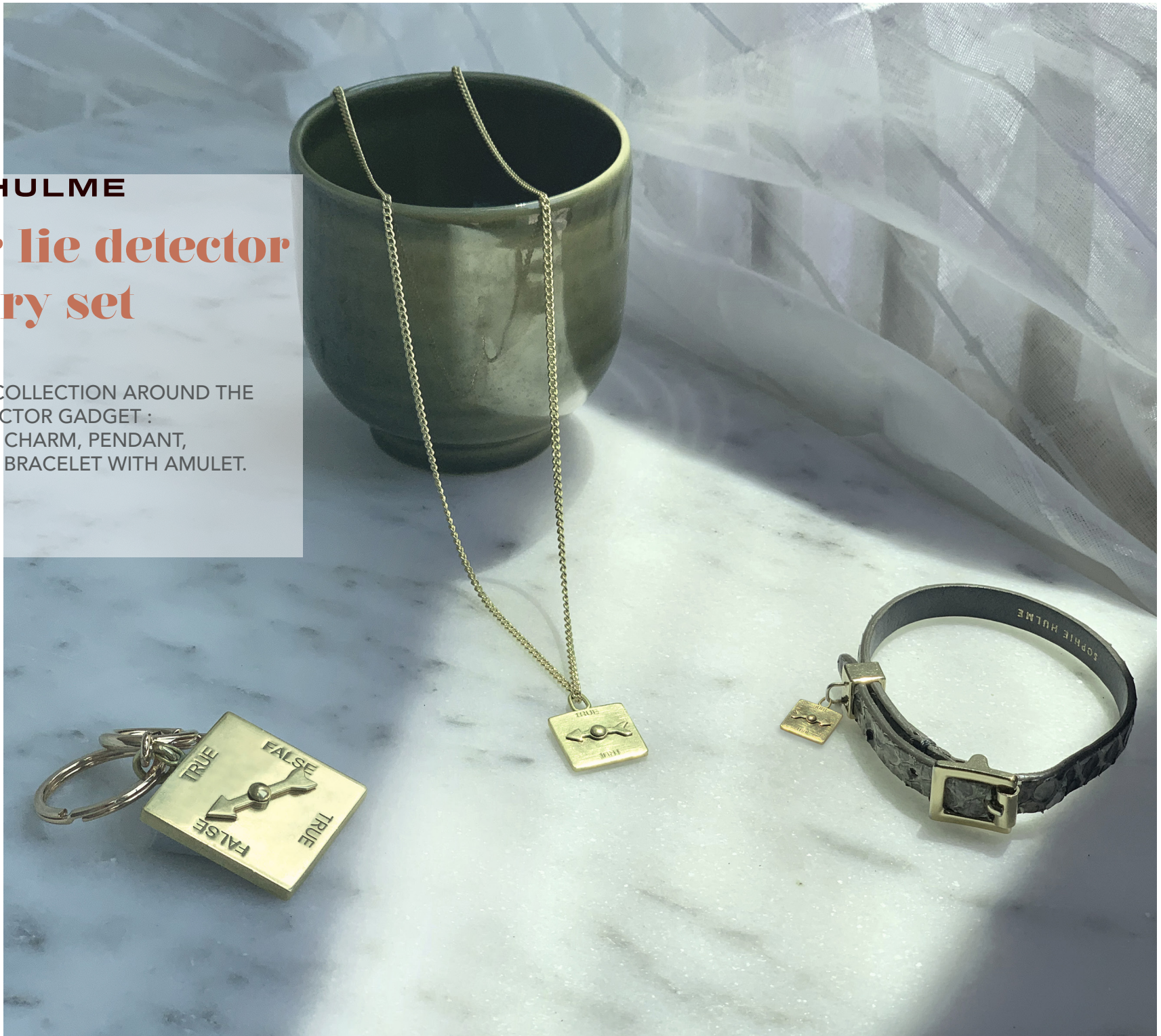


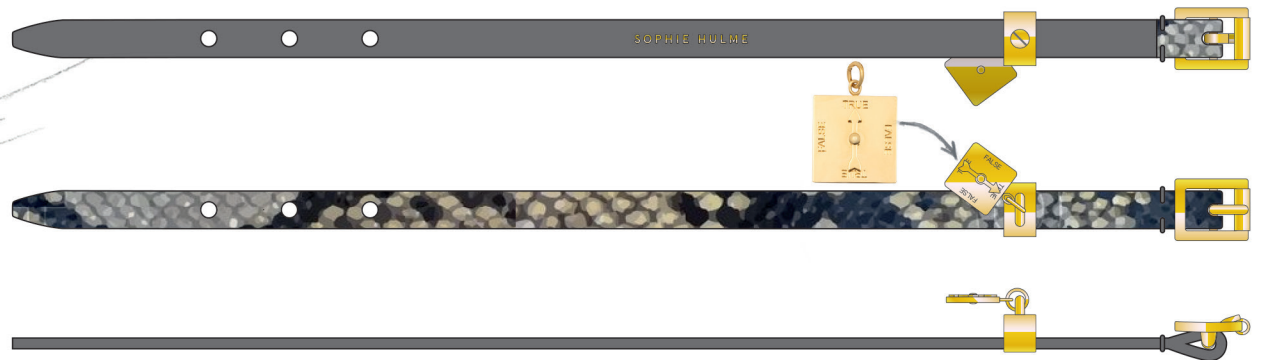
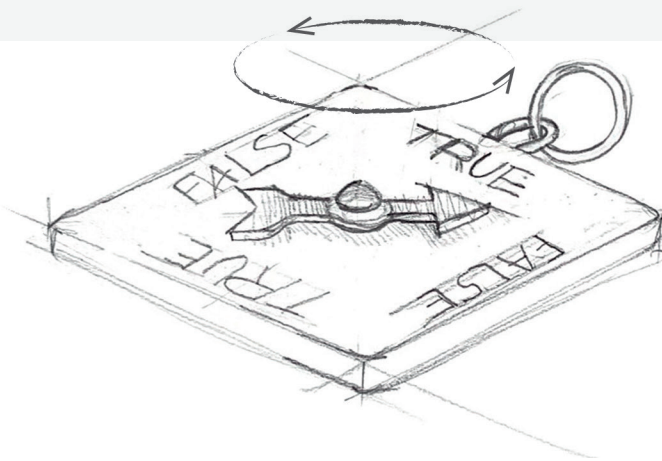
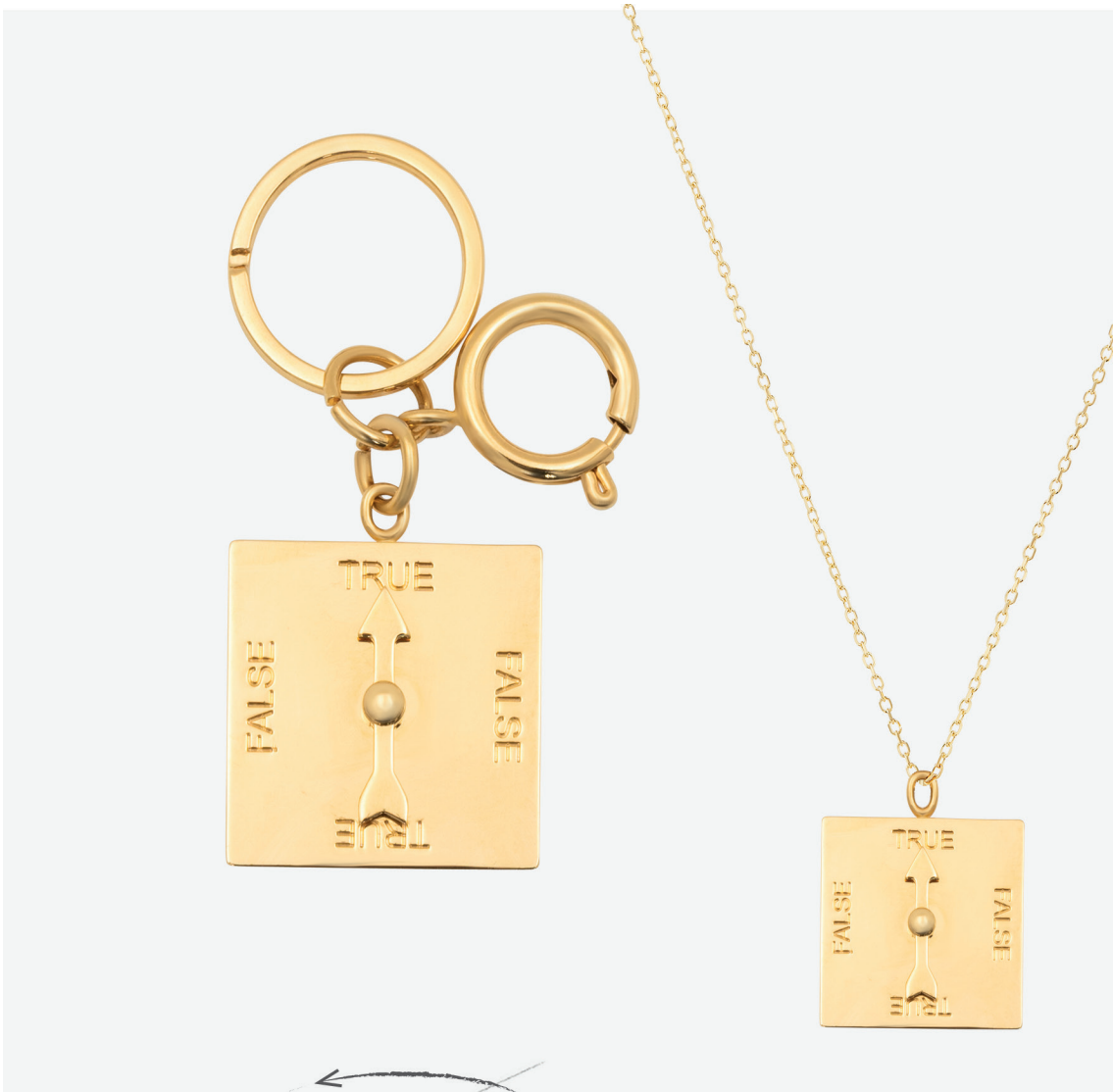
**SOPHIE HULME**

## **True or lie detector jewellery set**

—  
MINI JEWELLERY COLLECTION AROUND THE  
TRUE OR LIE DETECTOR GADGET :  
KEY RING OR BAG CHARM, PENDANT,  
PYTHON LEATHER BRACELET WITH AMULET.  
—

**PREAW17 / AW17**



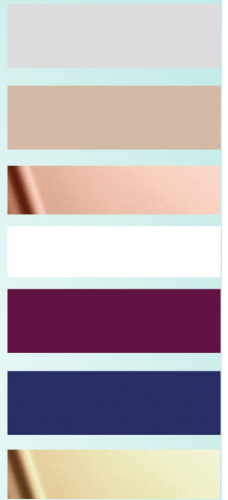
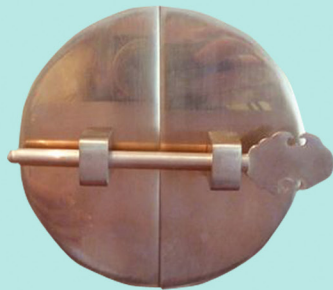
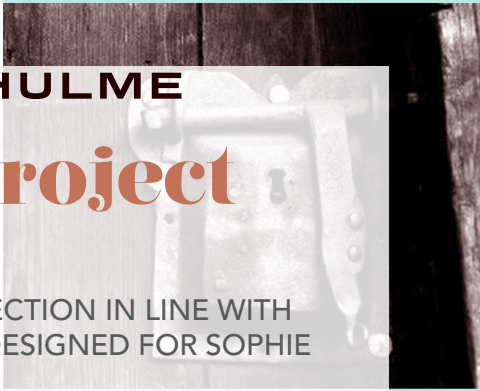


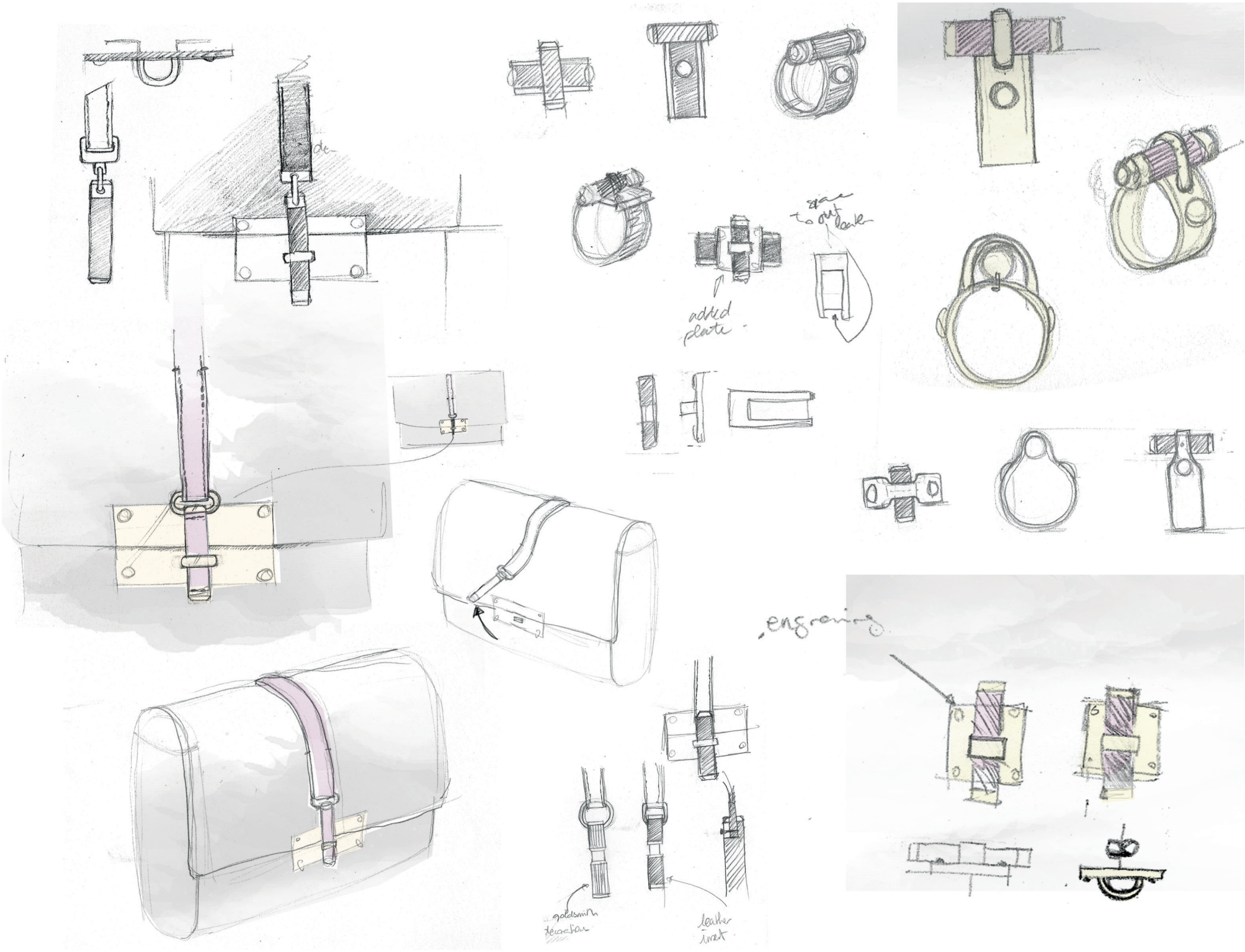
**SOPHIE HULME**

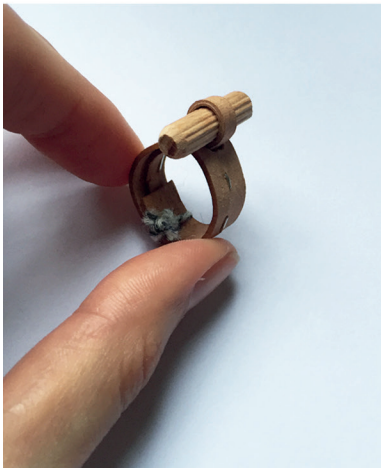
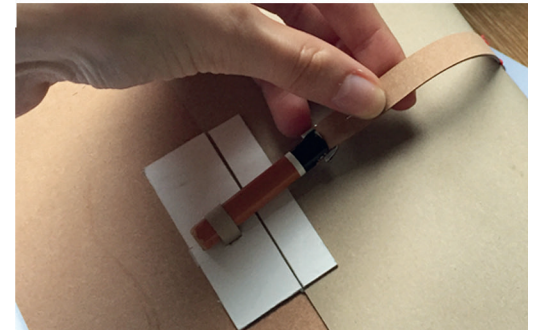
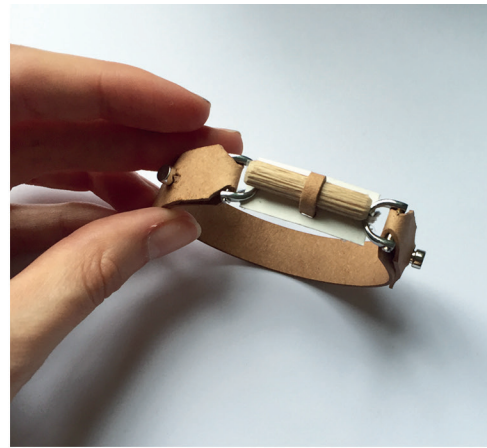
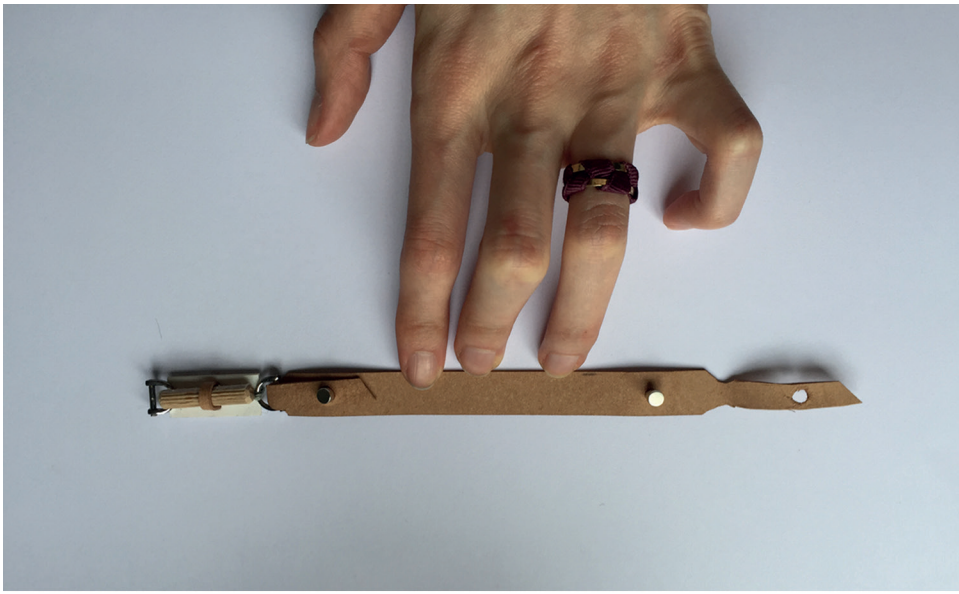
# Side Project

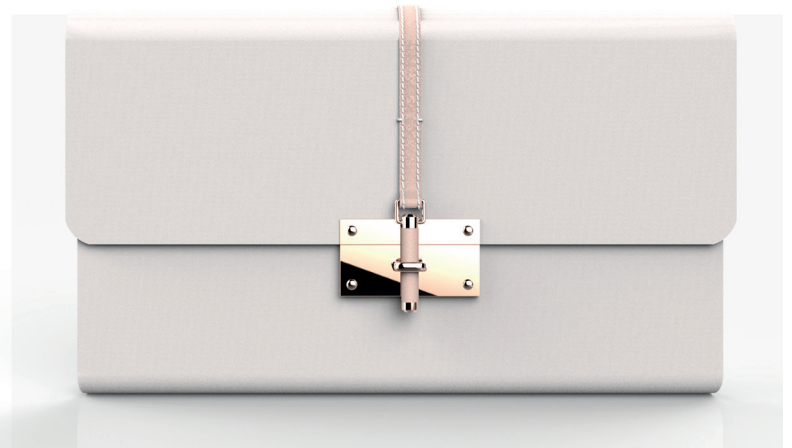
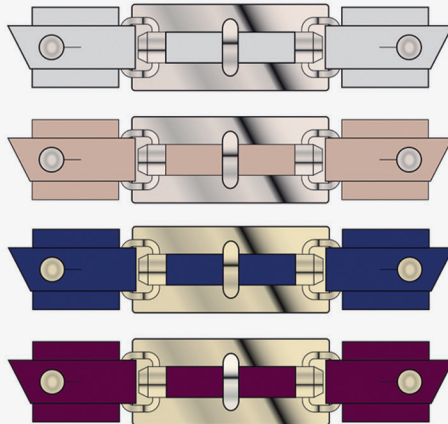
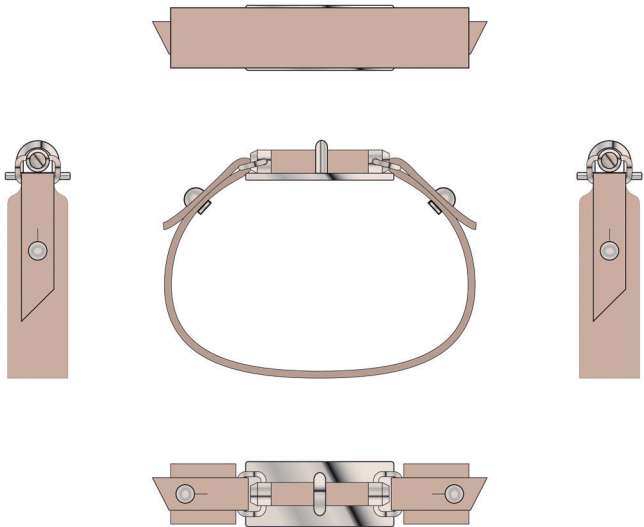
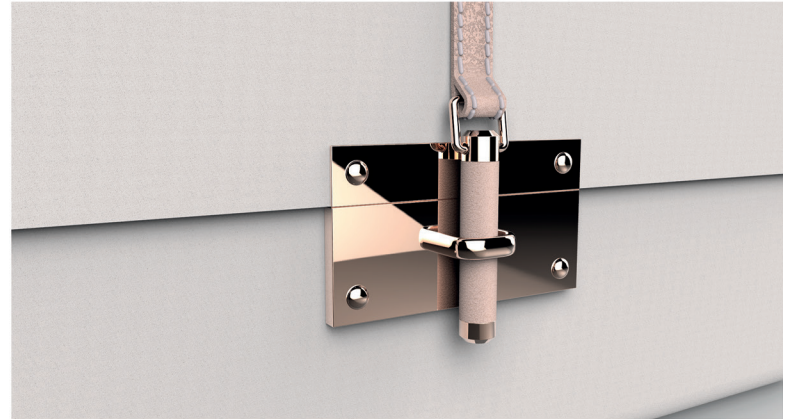
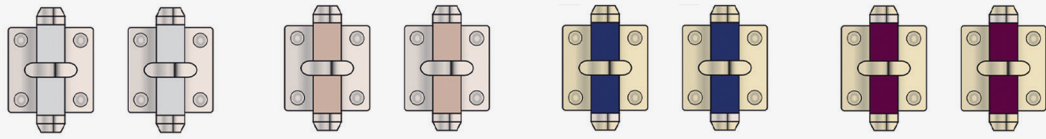
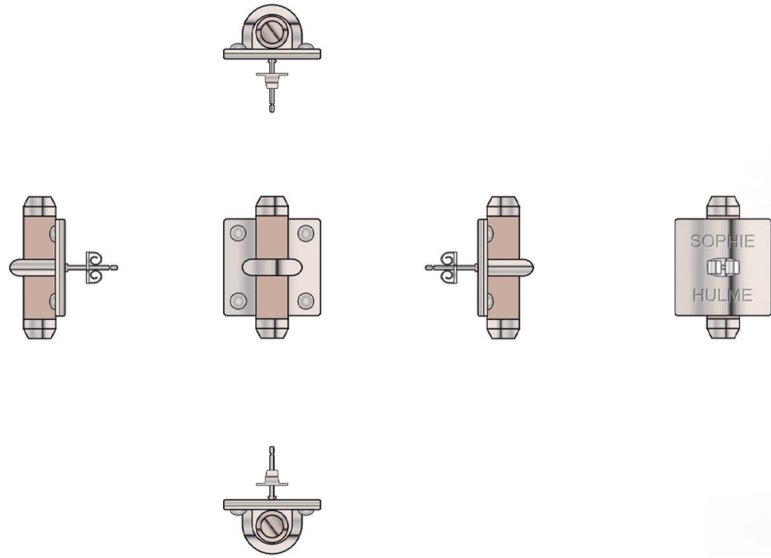
—  
JEWELLERY COLLECTION IN LINE WITH  
A BAG CLOSURE DESIGNED FOR SOPHIE  
HULME

—  
NL









**SOPHIE HULME**

# Chain jewellery set

—

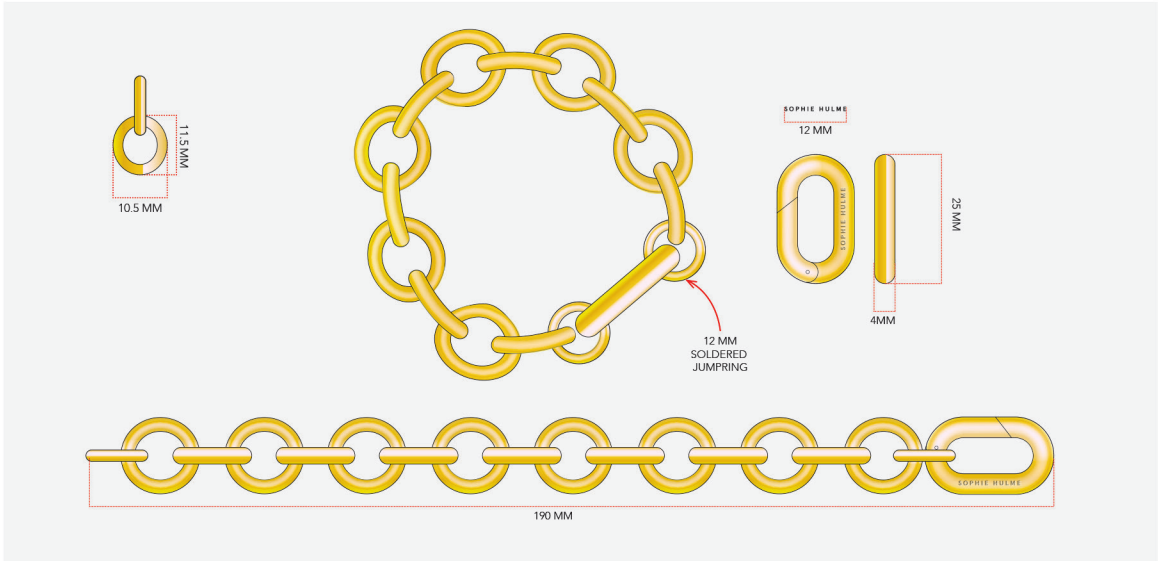
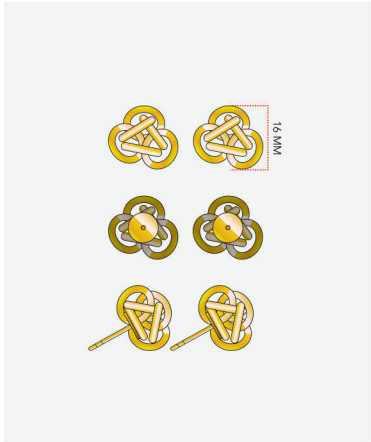
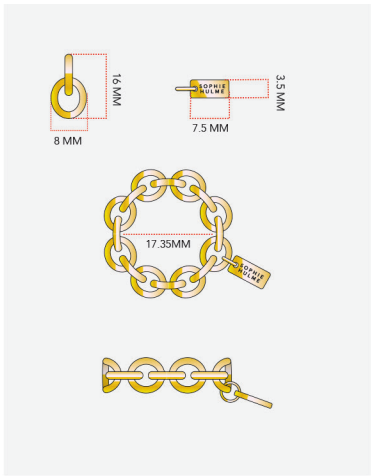
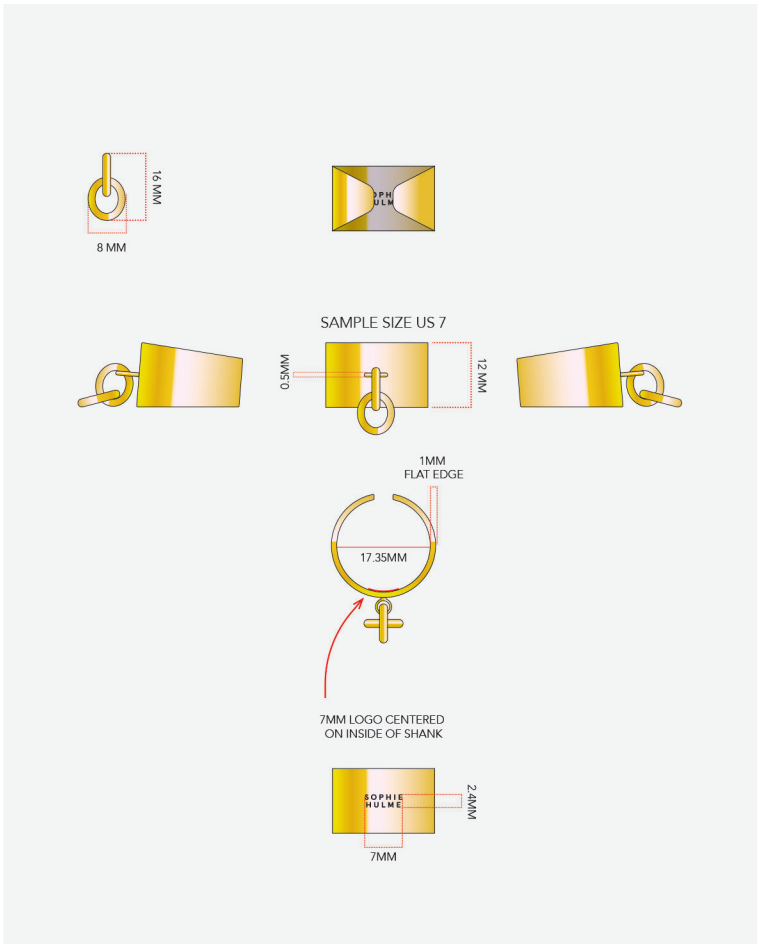
REINTERPRETATION OF THE ROUNDED  
CHAIN USED ON SOPHIE HULME'S EVENING  
BAGS INTO A MINI JEWELLERY COLLECTION :  
BRACELET, EARRINGS, 2 RINGS

—

**AW17**







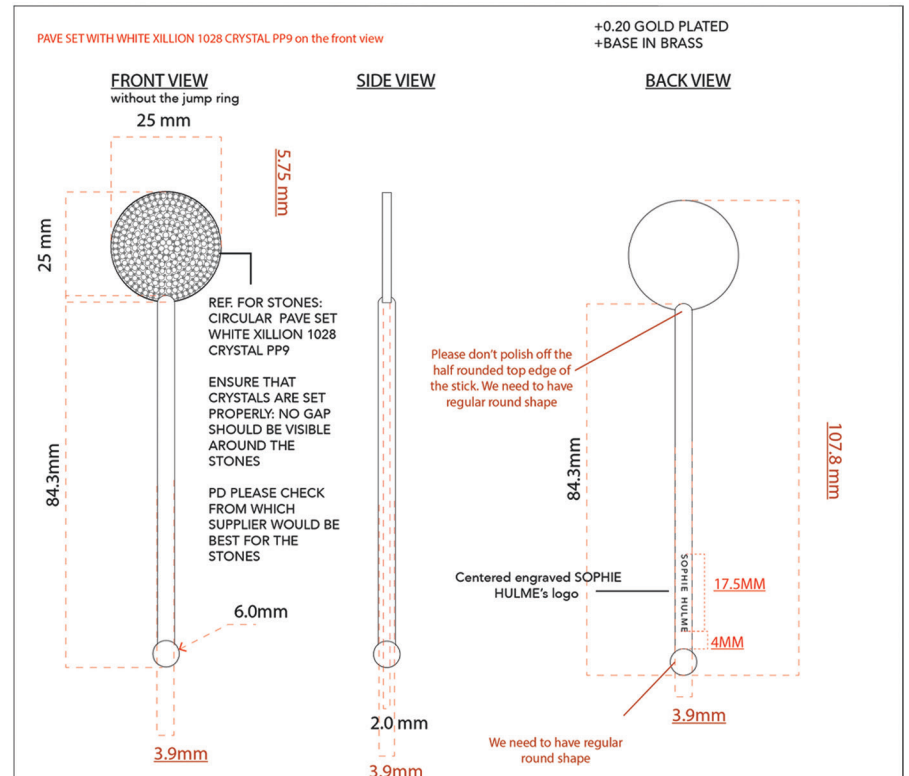
**SOPHIE HULME**

## **Crystal clutch**

—  
THIS EVENING STYLE CLUTCH COMBINES A PEARLY NUDE SHADE PERSPEX WITH A POLISHED GOLD-PLATED CRYSTAL SET COCKTAIL SITRRER CLOSURE. THE PURE SHAPE HIGHLIGHTS THE SPARKLY AND REFINED CLOSURE

—  
**PREAW17 / AW17**





**SOPHIE HULME**

## **Whistle clutch**

—

AN ELEGANT MEMBER OF THE PARTY COLLECTION, THIS EVENING STYLE CLUTCH COMBINES GLITTERY PERSPEX WITH A POLISHED GOLD-PLATED FRAME. THE ROUNDED RECTANGLE SILHOUETTE HINGE OPENS VIA A LOCKING MECHANISM WHICH CAN BE CLOSED WITH A WHISTLE CHARM

—

**PREAW17 / AW17**

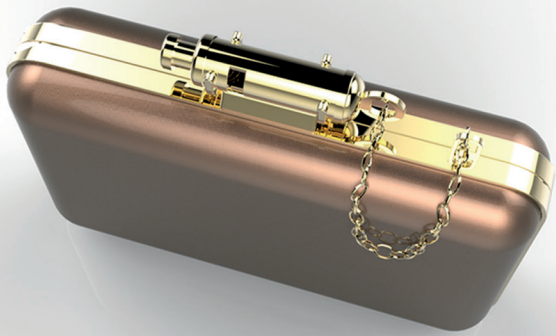
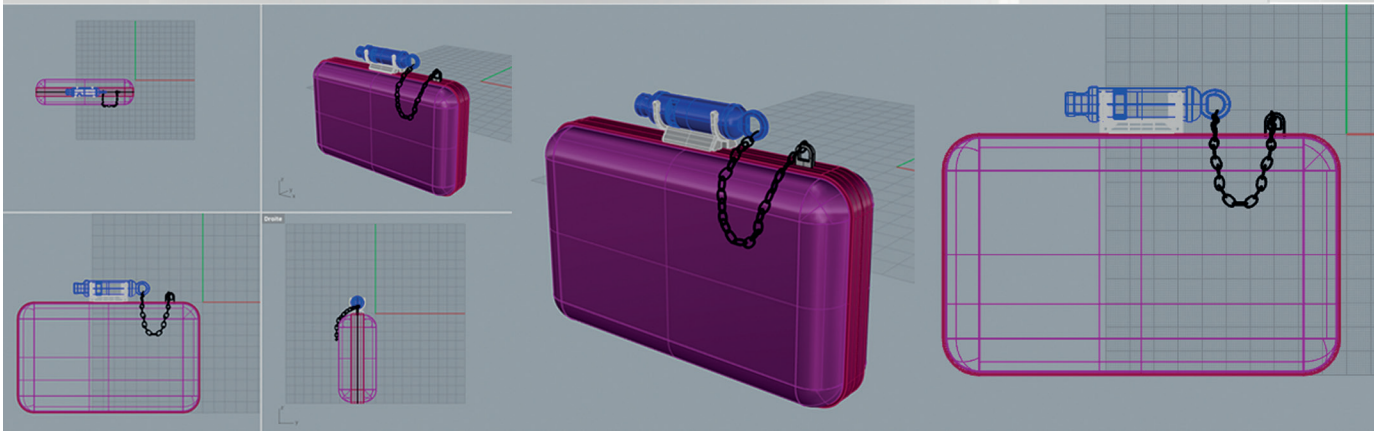


**PERSPEX AND PONY  
DECLINATIONS**

—  
FUNCTIONAL WHISTLE  
CLOSURE. THE MINI  
HINGED CLASPS WITH A  
REMOVABLE CHAIN STRAP  
CONVERT THE STYLE TO A  
SHOULDER BAG.



3D RENDERINGS

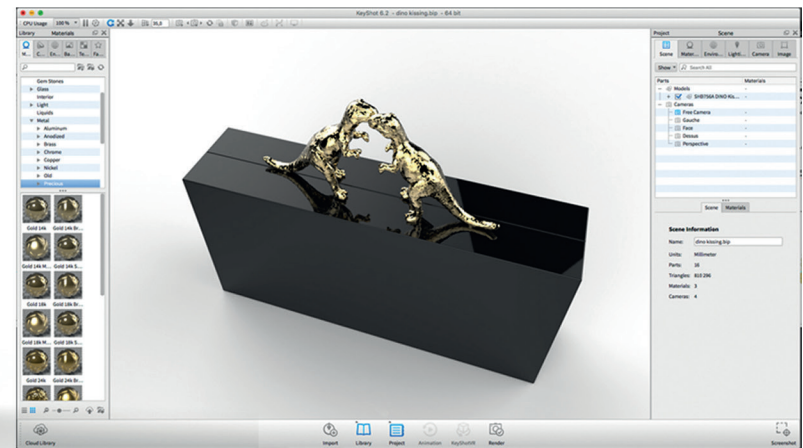
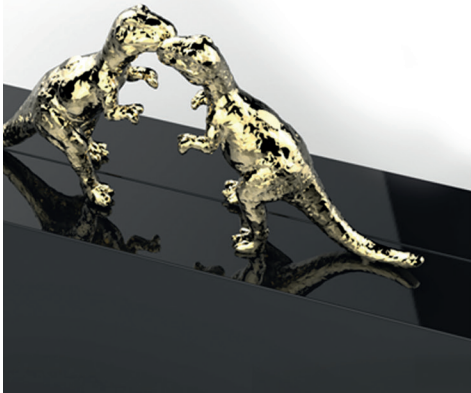
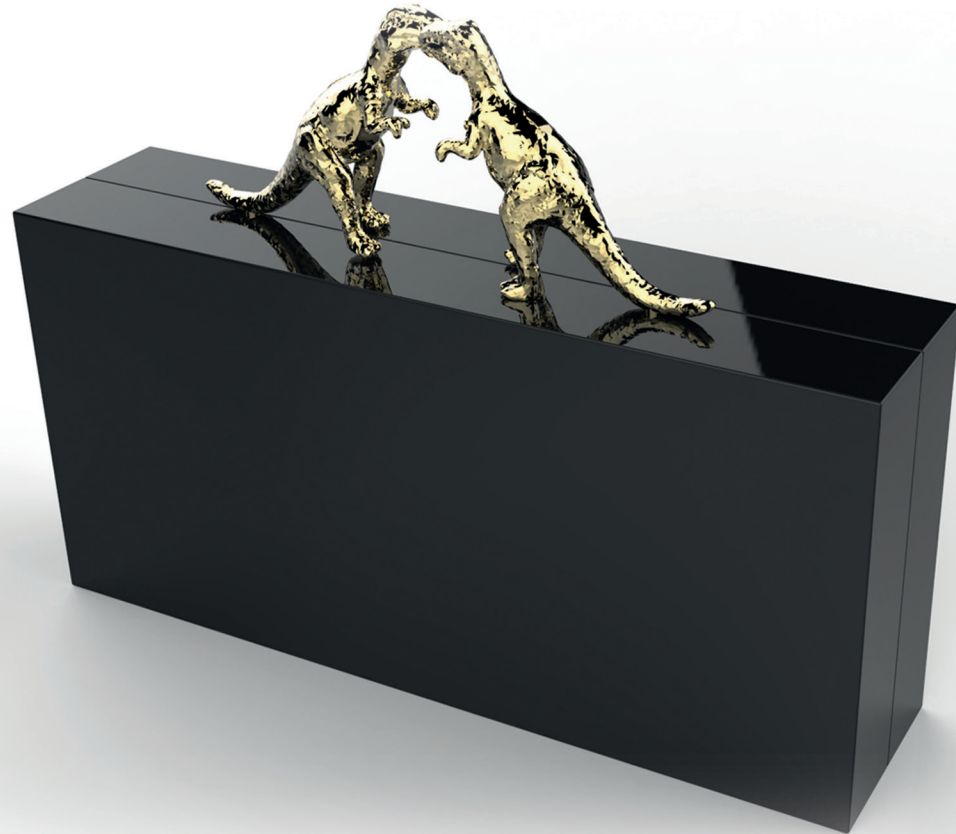


SOPHIE HULME

# Dino clutch

CLEAN AND TIMELESS RECTANGULAR CLUTCH CLOSED THANKS TO A SOPHISTICATED MAGNETIC CASTED DINOSAURS KISSING CLOSURE INSPIRED BY SOPHIE HULME'S ICONIC 1ST CHARM

NL

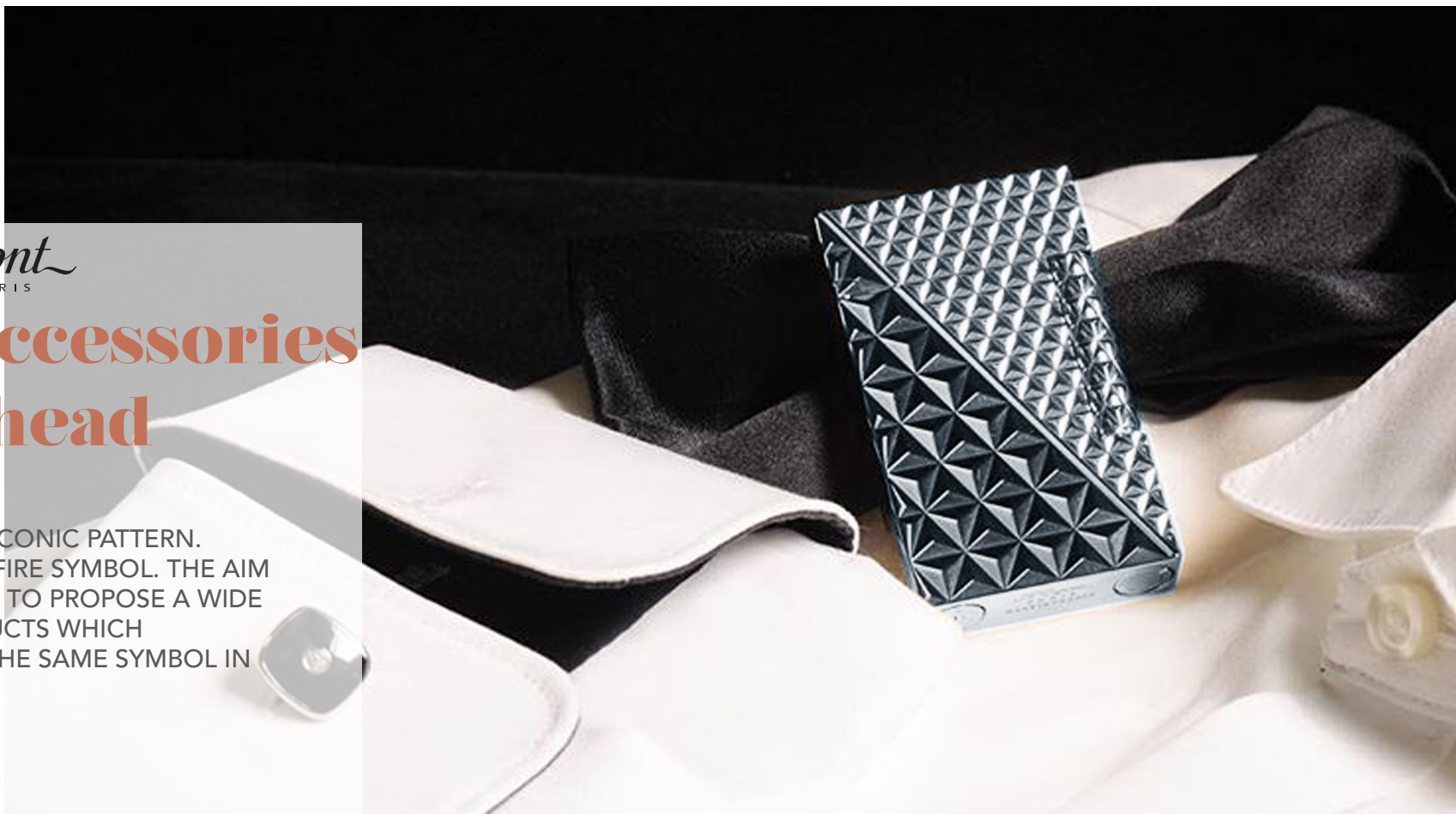
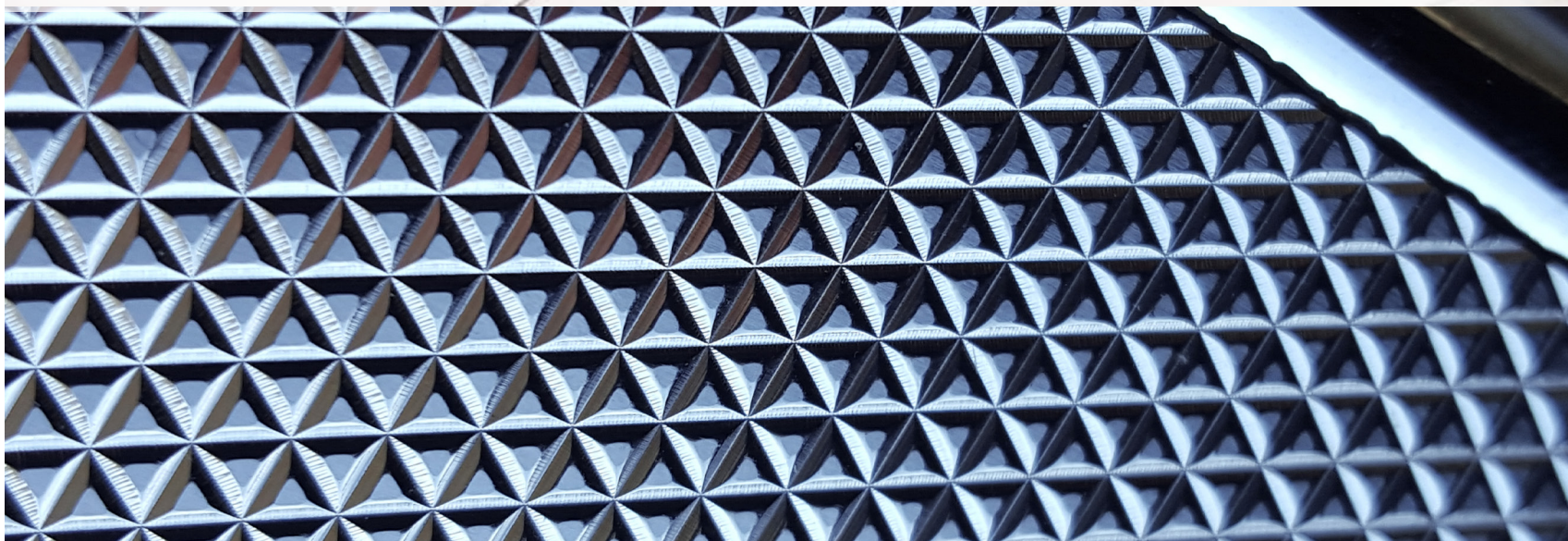


*S.T. Dupont*  
PARIS

## Men accessories • Fire head

—  
DESIGN OF NEW ICONIC PATTERN.  
INSPIRED BY THE FIRE SYMBOL. THE AIM  
OF THIS LINE WAS TO PROPOSE A WIDE  
RANGE OF PRODUCTS WHICH  
REINTERPRETED THE SAME SYMBOL IN  
DIFFERENT WAYS

—  
WINTER 2015





**RANGE OF ACCESSORIES :  
BELT BUCKLE AND STRAP,  
LIGHTER, PEN, KEYSRING,  
WALLETS, CUFFLINKS**

—  
COMBINATION BETWEEN  
METAL ENGRAVING  
TECHNIQUES AND LEATHER  
WORK, ENHANCING THE  
VARIOUS FACETS OF THE  
DIAMOND PATTERN



*S.T. Dupont*  
PARIS

# Atelier collection

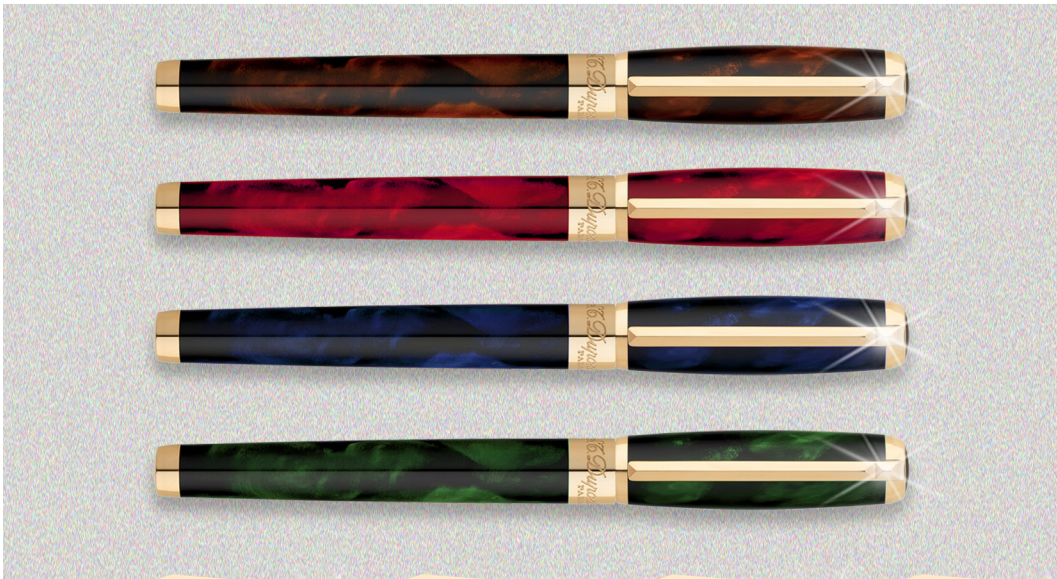
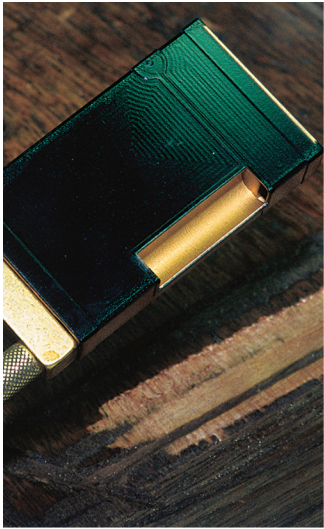
—

THIS LINE IS A TRIBUTE TO THE FIRST ST DUPONT FORM OF KNOW-HOW : THE ART OF «POPOTÉ». THIS ANCIENT TECHNIQUE INVOLVES PRODUCING A PATINATED EFFECT ON LACQUER USING DIFFERENT SHADES OF COLOURS, BRINGING TO LIFE A COLORFUL COLLECTION OF LIGHTERS, PENS AND LEATHERGOODS AND ACCESSORIES.

—

AW16





*S.T. Dupont*  
PARIS

**Phenix**  
limited edition

—  
PHENIX LIMITED COLLECTION. GOLD PLATED  
NEOCLASSIQUE PEN AND L2 LIGHTER  
EMBELISHED WITH PLACED BLACK CHINESE  
LACQUER

—  
JAN12





*S.T. Dupont*  
PARIS

# Rolling Stones

limited edition

DESIGN OF AN ASSORTMENT OF LIGHTERS AND CUFFLINKS ON THE OCCASION OF THE BAND TOUR IN EUROPE IN 2015. THIS COLLECTION REINTERPRETS THE FAMOUS SONG LYRICS AND THE ICONIC TONGUE LOGO.

JUN15

THE  
ROLLING STONES

LIMITED EDITION

*S.T. Dupont*  
PARIS

